



The Chattahoochee River

Chattahoochee River Basin



The Soque River

The most generally accepted story for the name of the river comes from the 1799 travel log of Benjamin Hawkins, an Indian agent: “The name of the river derived from “Chatto,” a stone, and “hoche,” marked or flowered; there being rocks of that description in the river above the Hoithletigua at an old town Chattahoochee.

Quick Facts about the River



The Chattahoochee River originates in the southeast corner of Union County, Georgia, flows southwesterly through the Atlanta metropolitan area, and terminates in Lake Seminole, at the Georgia-Florida border for a total distance of about 434 miles. As the river crosses the Georgia – Florida border, the name changes to the Apalachicola River which flows on to the Gulf of Mexico.

Did You Know?

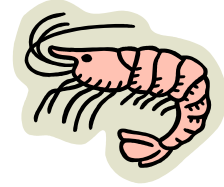
- The lower Chattahoochee probably has the largest collection of archeological sites in Georgia, ranging from Paleo-Indian to Creek.
- Over most of its length, the flow of the Chattahoochee River is controlled by hydroelectric plants releasing water for production of hydropower.
- Chattahoochee River Basin is inhabited by about 24 species of freshwater aquatic turtles, about 37 species of salamanders and sirens, about 30 species of frogs and toads, and the American alligator. The Chattahoochee River Basin is home to 9 state threatened or endangered plant species.
- The Chattahoochee River supplies 70% of metro Atlanta's drinking water, which is more than 300 million gallons per day! The headwaters above Atlanta comprise the smallest watershed providing a major portion of water supply for any metropolitan area in the country!

Environmental Concerns

- In 2000, the city of Atlanta was forced by a federal consent order to remove 568 tons of trash, including seven automobiles, from streams that feed into the Chattahoochee.
- As metropolitan Atlanta has experienced unprecedented growth during the last 30+ years, severe sewage discharge problems and sediment inflow have affected water quality.

Economic Ties to the River

Apalachicola Bay produces 90 percent of Florida's and 13 percent of the Nation's oyster harvest, and functions as a nursery for shrimp, blue crabs and a variety of fin fish.



Parks Along the River

- Chattahoochee Nature Center – private, non-profit educational facility located in Roswell. Teaches about the wildlife and ecosystems of the Chattahoochee River.
- Chattahoochee River National Recreation Area – includes 48 miles of river and 16 parks to preserve the beauty and recreational value of the river. Find out more at <http://www.nps.gov/chat>.

How to Get Involved

Chattahoochee Cold Water Tailrace Fishery Foundation

Chris Scalley
710 Riverside Road
Roswell, Georgia 30075
Phone: 770-650-8630
Chris.scalley@mindspring.com
www.riverthroughatlanta.com

Chattahoochee Riverkeeper, Inc.

Jim Phillips
117 12th Street
PO Box 1492
Columbus, Georgia 31902
Phone: 706-317-4837
Fax: 706-576-6542
riverkeeper@poweport.net
www.theriverwatch.org

Friends of Douglas County

5540 South River Road
Douglasville, Georgia 30135
Phone: 770-947-8080
Fax: 770-947-8955

Friends Of The Upper Chattahoochee

268 Daniel Drive
Cleveland, Georgia 30528
Phone: 706-865-0262
kr4ac@alltel.net

Huntley Hills Watershed Alliance

Kay Packard
3773 Captain Drive
Chamblee, Georgia 30341
Phone: 770-451-6079
Fax: 770-234-9058
kpackard@bellsouth.net

Lake Lanier Association

Vicki Barnhorst
615-F Oak Street, Suite 100
Gainesville, Georgia 30501
Phone: 770-503-7757
Fax: 770-503-7757
vbarnhorst@lakelanier.org
www.lakelanier.org

Little Nancy Creek Watershed Alliance

551 Chateaugay Lane
Atlanta, Georgia 30342
Phone: 404-531-0006
Fax: 404-760-5129
kpmccauley1@netscape.net
www.littlenancy.org

Long Island Creek Watershed Preservation Association (LICWPA)

800 Crest Valley Dr. NW
Atlanta, Georgia 30327
Phone: 404-255-4905
Fax: 404-255-4067
DaHushPup@aol.com

Nickajack Watershed Alliance

1365 Buckner Road
Mableton, Georgia 30126
Phone: 770-944-9259
Fax: 770-434-3911
fmanas@bellsouth.net

Oxbow Meadows Environmental Learning Center

Dr. Becky Champion
3535 South Lumpkin Road
Columbus, Georgia 31901
Phone: 706-687-4090
Fax: 707-687-3020

Soque River Watershed Association

Justin Ellis, Executive Director
PO Box 1901
Clarksville, Georgia 30523
Phone: 706-754-9382
srwa@hemc.net

Upper Chattahoochee Riverkeeper

3 Puritan Mill
916 Joseph Lowery Blvd.
Atlanta, Georgia 30318
Phone: 404-352-9828
Fax: 404-352-8676
sbethea@ucriverkeeper.org
www.chattahoochee.org